

# Array

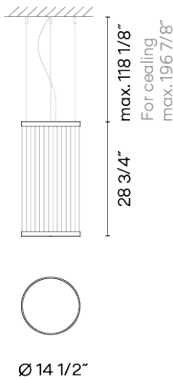
## 1800

VIBIA

Design By Umut Yamac

The Array pendant lamp includes a series of technical filaments that are pulled taut between two rings through which the light rises creating a colour gradient. The cylindrical shape and intimate size make it perfect for small scale spaces.

### Spec sheet



undefined: undefined

Any modifications require a minimum order quantity and extra lead time

- Finish**
- 37 Terra Red  
NCS S 4040-Y70R
  - 24 Beige M1  
NCS S 2005-Y50R
  - 47 Green L1  
NCS S 4005-G80Y

**LED** 2700 K

**Dimming** 0-10V

**Installation type** Surface / Remote Micro

**LED** CRI>90 2662 lm 121 2700 K

**Driver** Constant Voltage 90~305 V V 50~60 Hz HZ

F Dimmable LED IP20 Multi-volt

**Application** Pendants

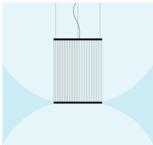
**Packaging** Box

Gross weight  
Net weight

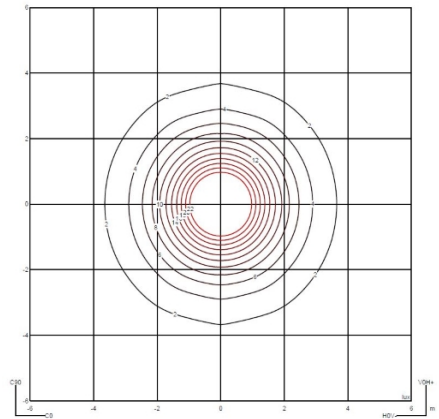
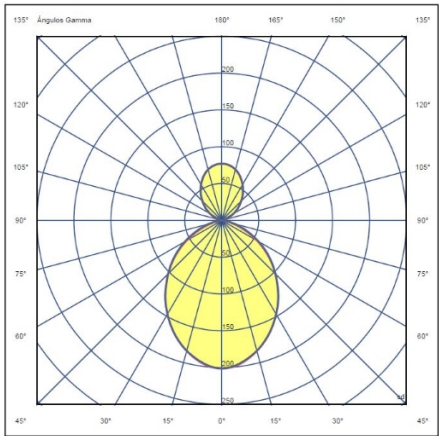
#### Lighting effect

##### Volumetric Diffuser

Subtly directed, diffused light that generates a soft hierarchy of light on to the illuminated surface



#### Photometric Data



**Efficiency** 26.94 lm/W  
**Coordination System** CG  
**Total Flux** 592.57 lm  
**Maximum Value** 201.28 cd

VIBIA, INC.

Office / Oficina  
272 Fernwood Ave. Edison, NJ 08837. USA

International T 732 417 1700  
Spain / Portugal T +34 934 796 970

All of our products come with a two year standard warranty. Check US & Canada Term and Condition sales@vibia.com

sales@vibia.com  
www.vibia.com/us/usa